

Yukon Geoscience Information

on the Internet

www.geology.gov.yk.ca



CGKN Workshop

March 8, 2003

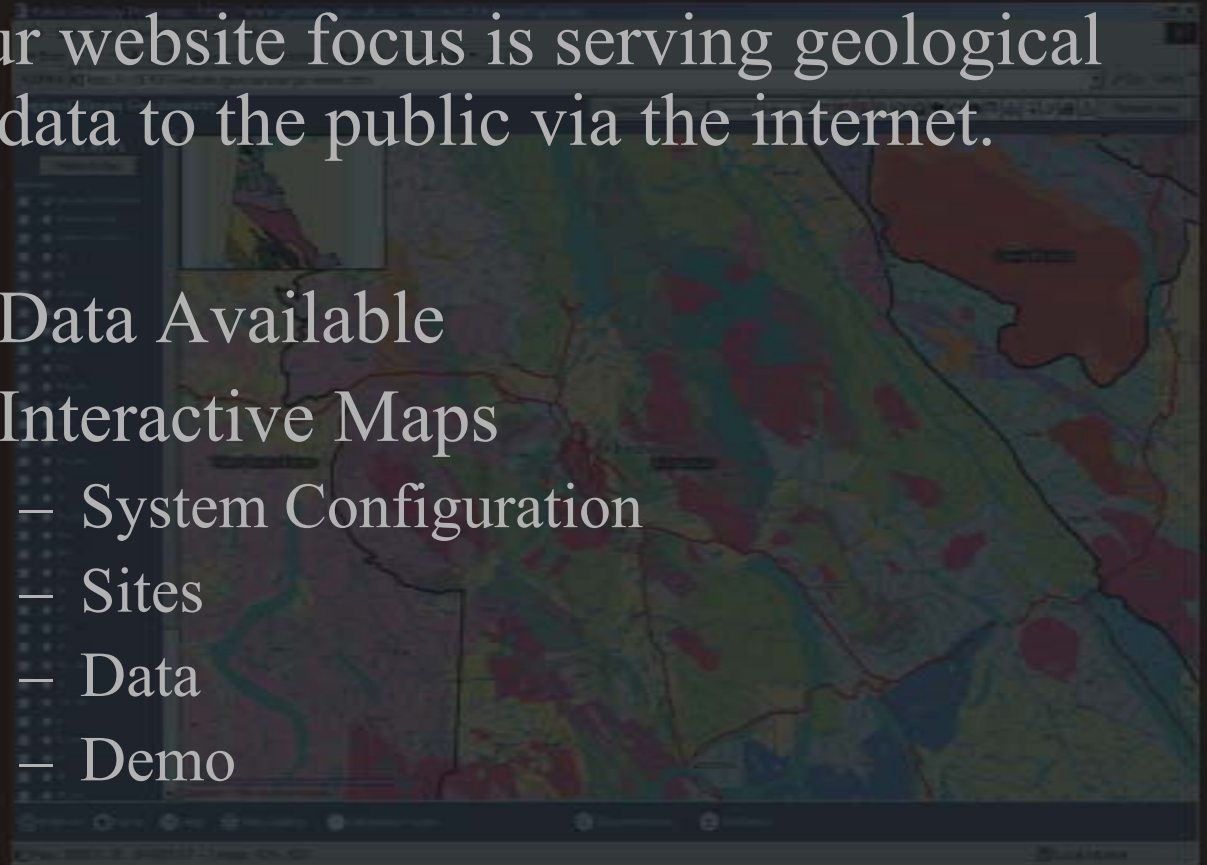
Amy Stuart

Yukon Geology Program

Overview

Our website focus is serving geological data to the public via the internet.

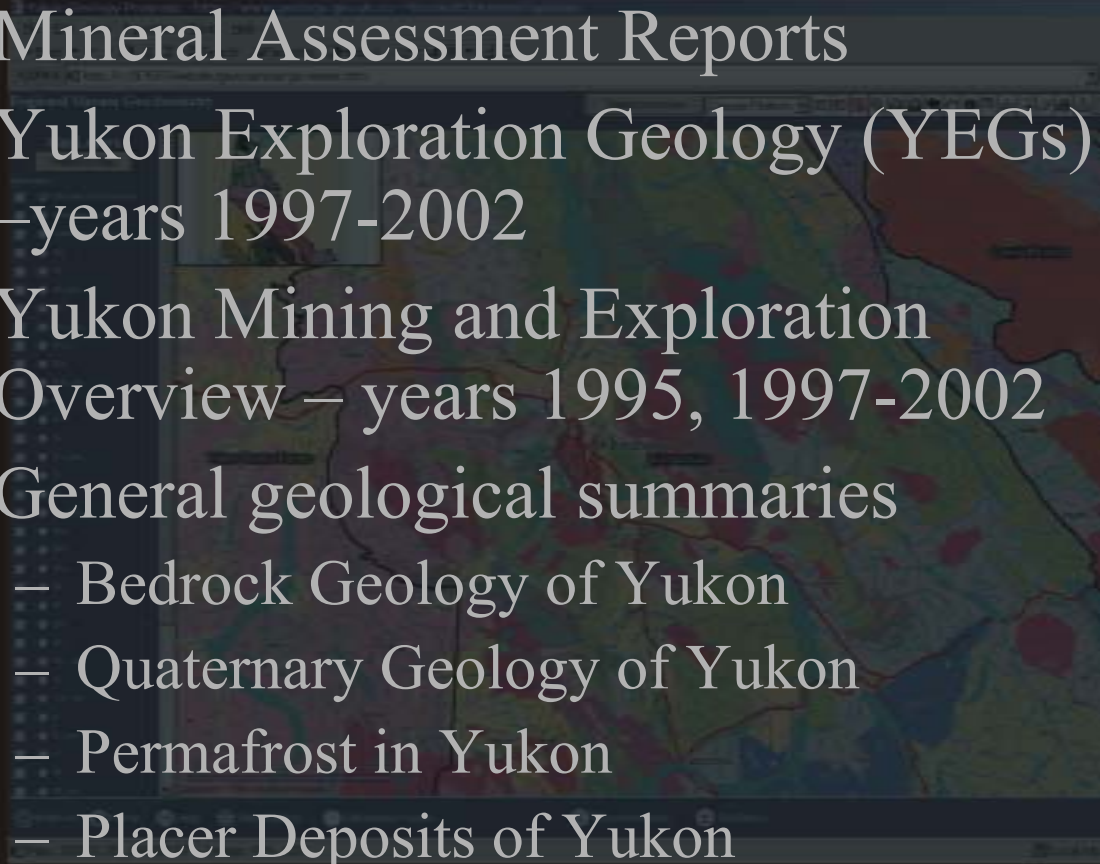
- Data Available
- Interactive Maps
 - System Configuration
 - Sites
 - Data
 - Demo



Databases

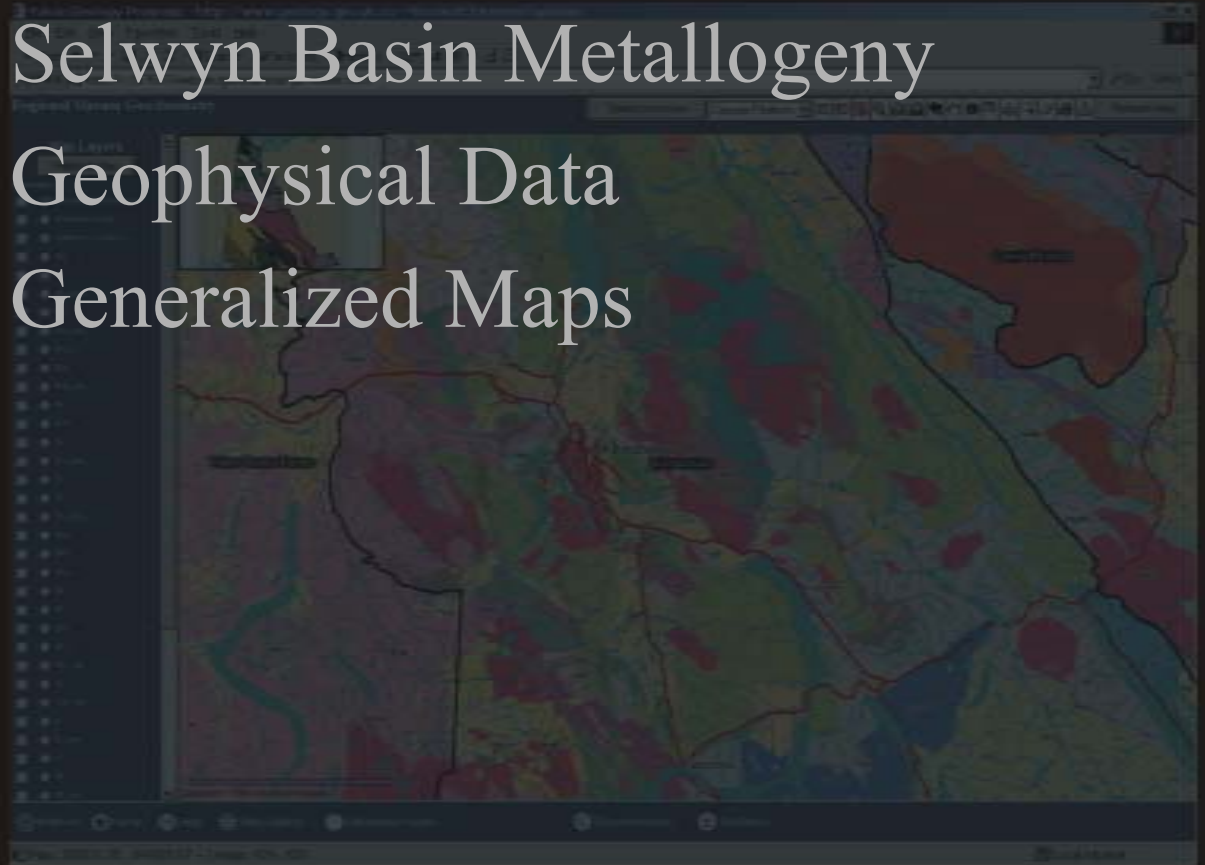
- Yukon Regional Geochemical Database 2003
- Yukon Age 2002 (Geochronology)
- Yukon Geoprocess File (Geological Processes and Terrain Hazards)
- Yukon Placer Database 2002
- Yukon MINFILE 2002 – maps, text, or database
- Yukon Digital Geology CD

Textual Information

- Mineral Assessment Reports
 - Yukon Exploration Geology (YEGs)
 - years 1997-2002
 - Yukon Mining and Exploration Overview – years 1995, 1997-2002
 - General geological summaries
 - Bedrock Geology of Yukon
 - Quaternary Geology of Yukon
 - Permafrost in Yukon
 - Placer Deposits of Yukon
- 
- A background map of the Yukon region, showing various geological features, mining areas, and geographical boundaries. The map is overlaid with a semi-transparent dark layer, and the text of the list is placed over it.

Other Geological Data

- Selwyn Basin Metallogeny
- Geophysical Data
- Generalized Maps

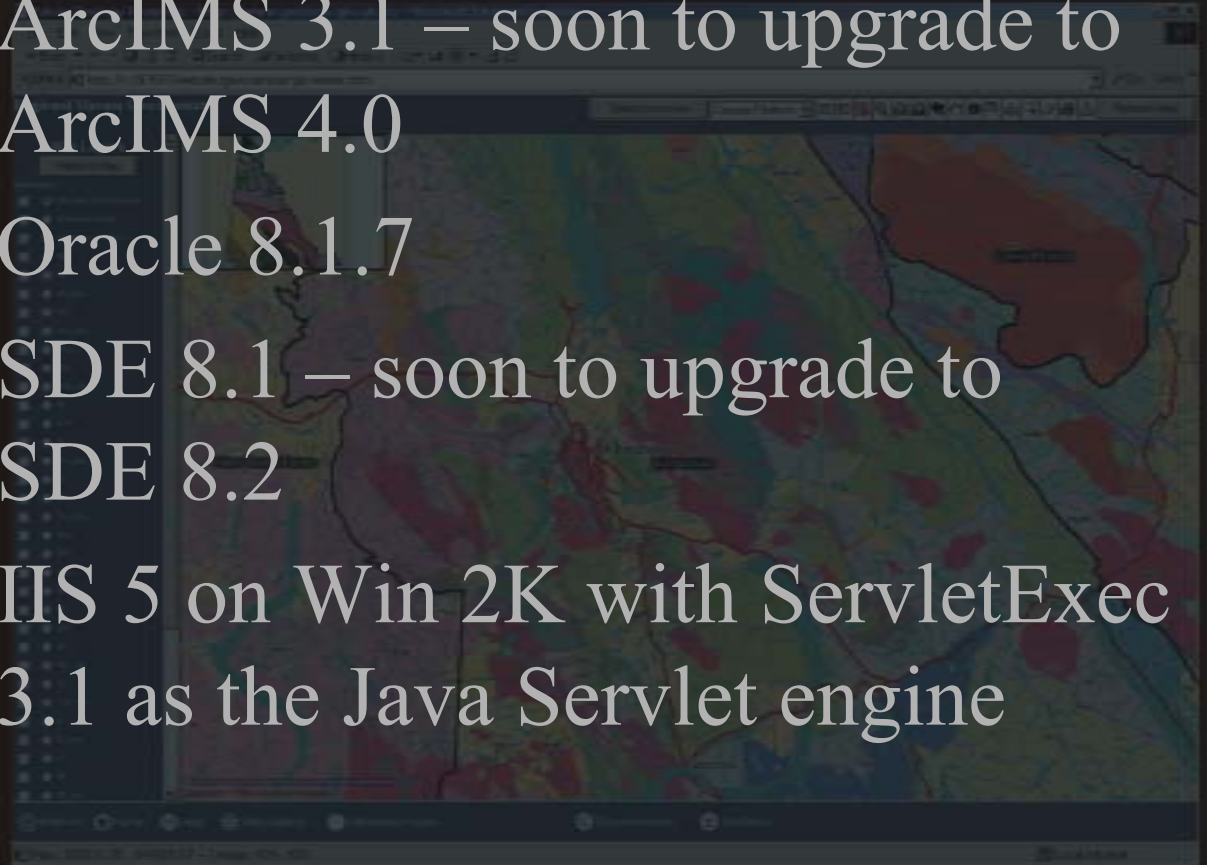


Interactive Maps

Utilizing ArcIMS Technology

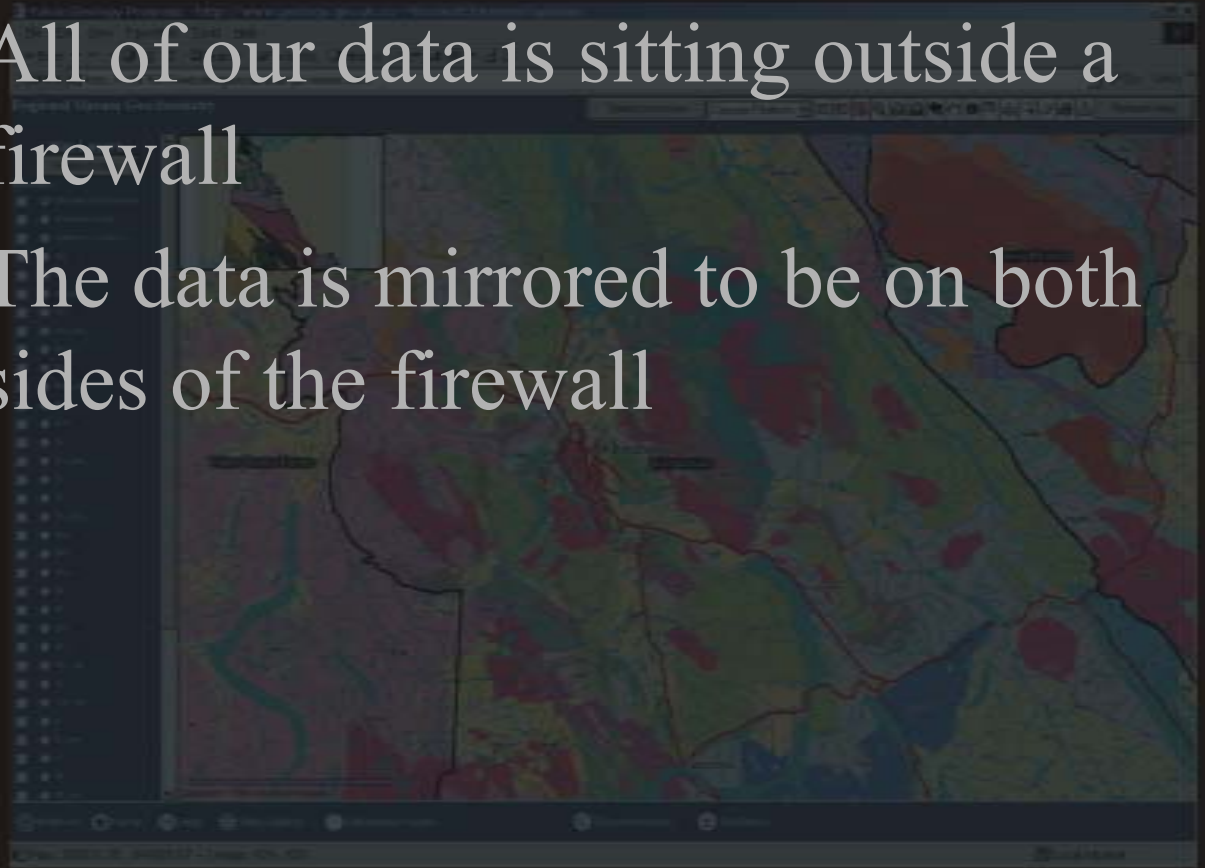
System Configuration

- ArcIMS 3.1 – soon to upgrade to ArcIMS 4.0
- Oracle 8.1.7
- SDE 8.1 – soon to upgrade to SDE 8.2
- IIS 5 on Win 2K with ServletExec 3.1 as the Java Servlet engine



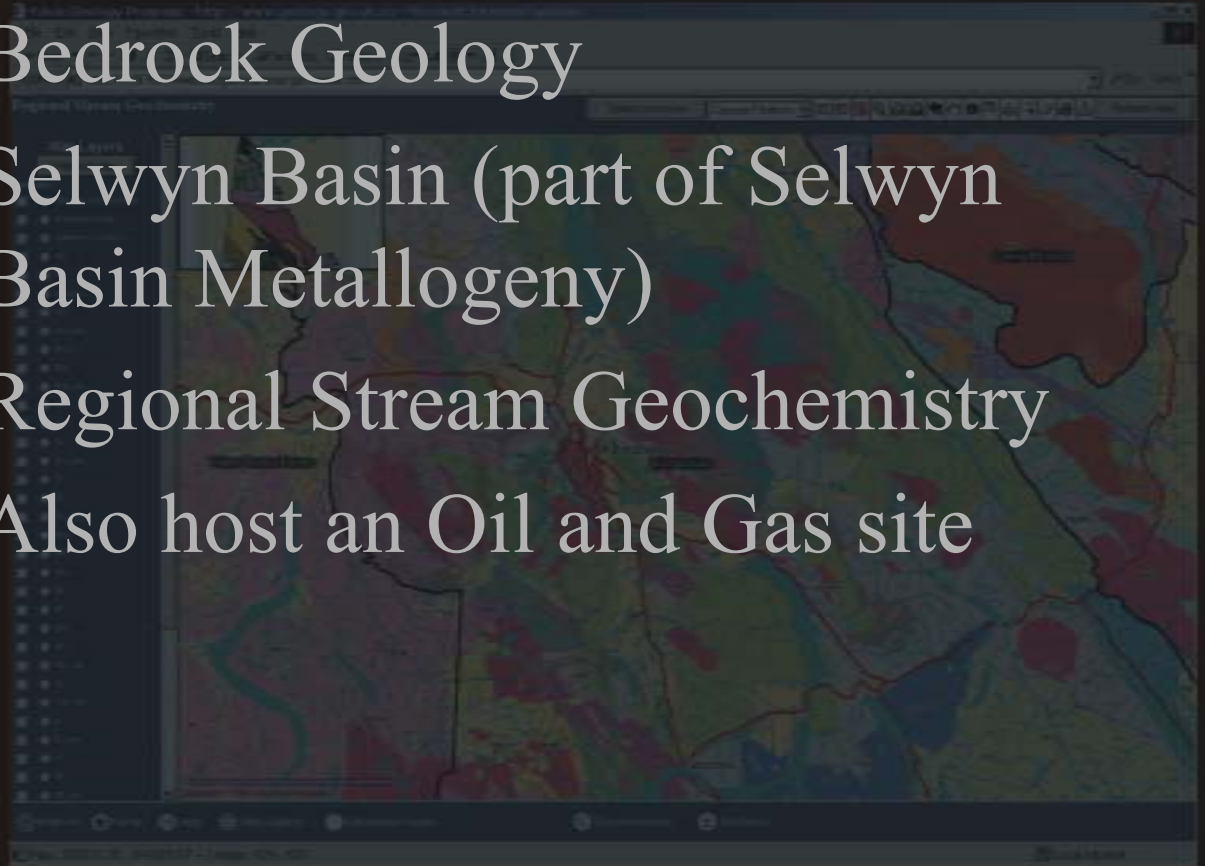
Firewall

- All of our data is sitting outside a firewall
- The data is mirrored to be on both sides of the firewall



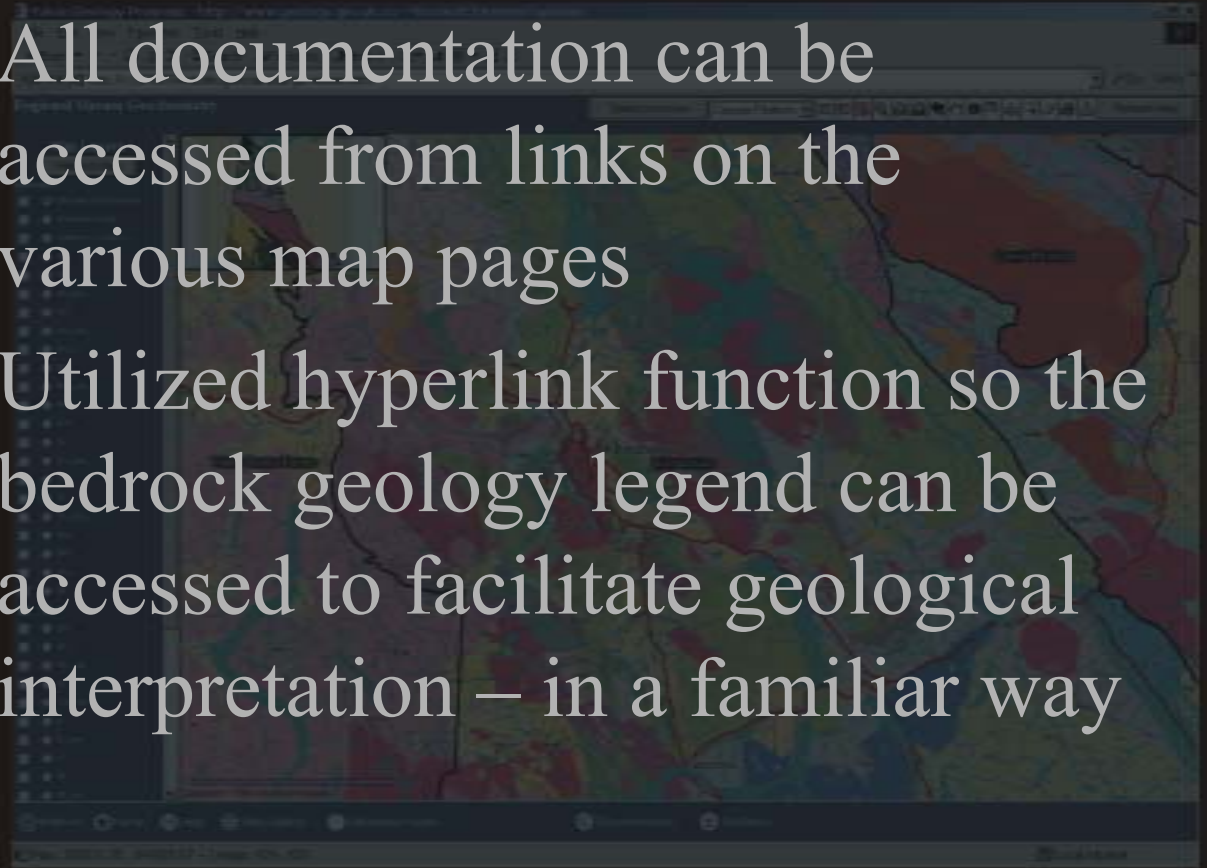
YGP IMS Sites

- Bedrock Geology
- Selwyn Basin (part of Selwyn Basin Metallogeny)
- Regional Stream Geochemistry
- Also host an Oil and Gas site



Linked Data

- All documentation can be accessed from links on the various map pages
- Utilized hyperlink function so the bedrock geology legend can be accessed to facilitate geological interpretation – in a familiar way



Data Layers

Bedrock Geology	Selwyn Basin	Regional Stream Geochemistry
Base data	Base data	Base data
communities	communities	communities
roads*	roads*	roads*
riders*	riders*	riders*
lakes*	lakes*	lakes*
boundary	boundary	boundary
250NTS sheets	250NTS sheets	250NTS sheets
First Nations Settled Lands	First Nations Settled Lands	First Nations Settled Lands
Geoscience	Geoscience	Geoscience
mineral occurrences	mineral occurrences	mineral occurrences
mineral claims	mineral claims	mineral claims
geochronology	geochronology	geochronology
terrane geology	terrane geology	terrane geology
regional unit geology	regional unit geology	regional unit geology
	geochemistry	geochemistry

* Scale dependent (1:50 000, 1:250 000, and 1:1 000 000)

Yet to be implemented...

- Interactive surficial geology site
- E-commerce
- Interactive geophysical data



YGP Demo

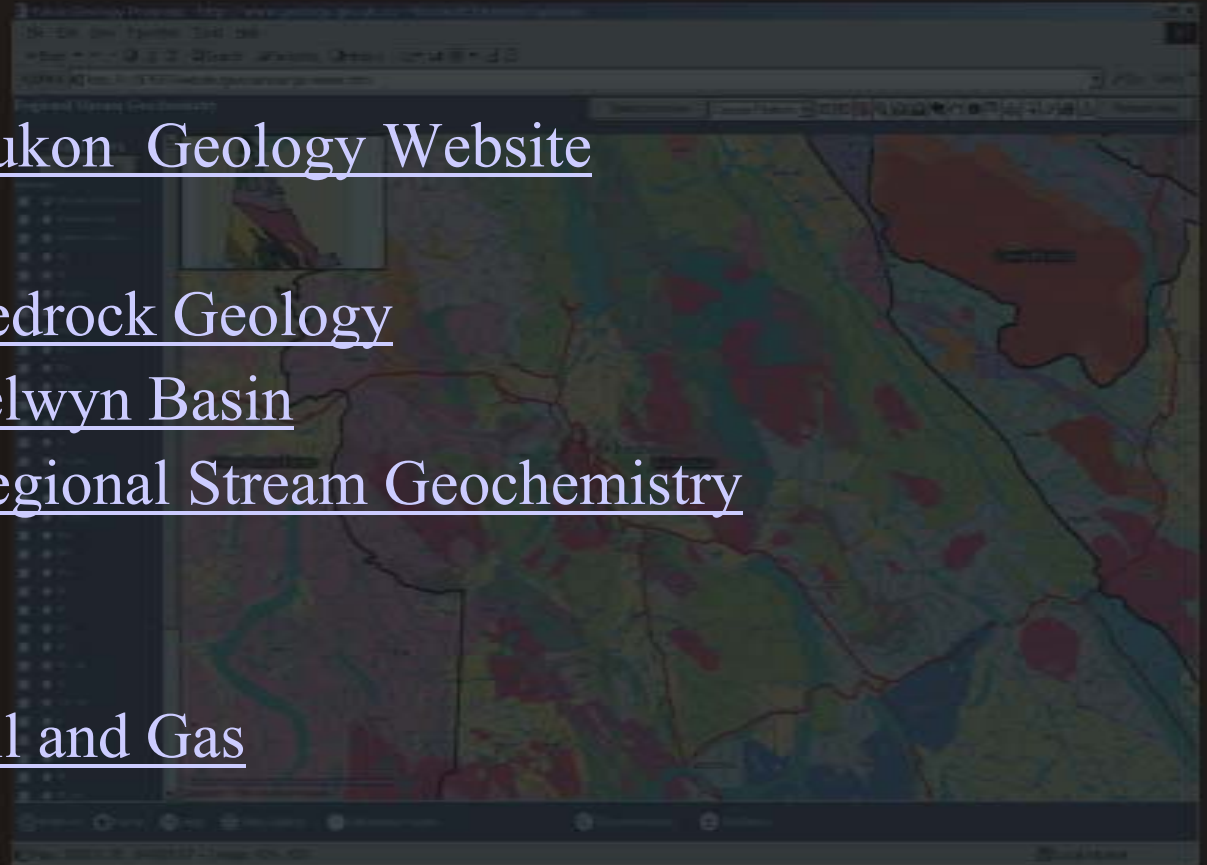
[Yukon Geology Website](#)

[Bedrock Geology](#)

[Selwyn Basin](#)

[Regional Stream Geochemistry](#)

[Oil and Gas](#)



[Offline](#)